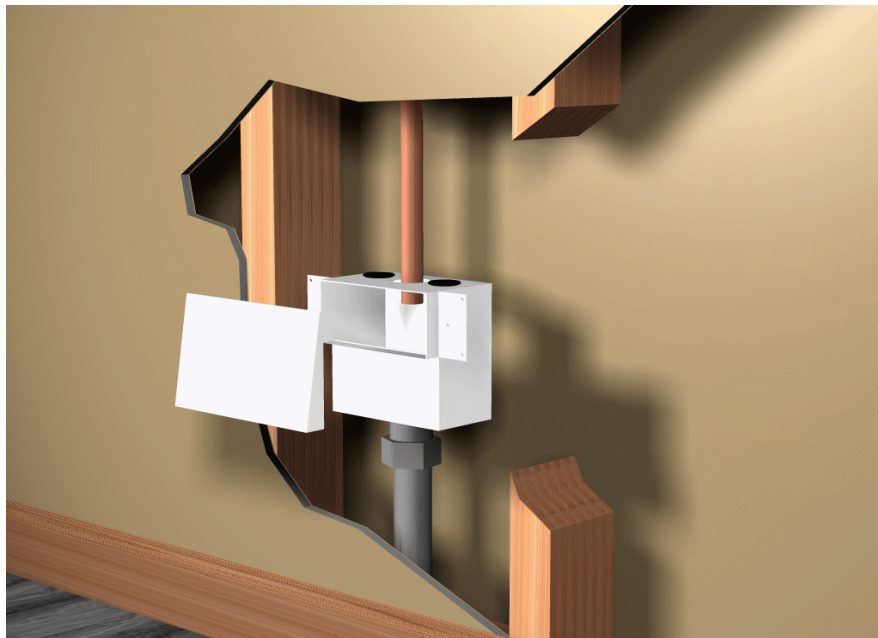


***THE BEST
REASONS FOR YOU TO SPECIFY***
another



Product

Mod-Tec Inwall Tundish



The IDEAL Air Break

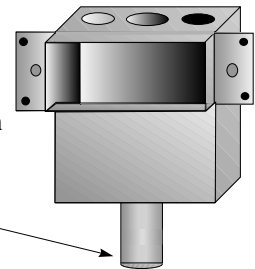
Mod-Tec Inwall Tundish

- Made of 316 Stainless Steel to fit in Fire Rated Walls.
- Easy and Economical to set up for Airconditioning Discharges.
- Easily removed face plate. Can be Vandal Proof Fitted.
- Face Plates are available in....

Standard Non Windowed
 Satin Stainless Steel with windows
 Powder Coated
 Highly Polished Stainless



All this section is built into Wall and is not seen



Use Pvc to Copper slip coupling



The Stainless Steel Cover is the only Part Visible on Wall

The Ideal Air Break

Mod-Tec Inwall Tundish Separate Views of components

Specification

Install Mod-Tec Inwall Tundish with overflow at (Nominate Height) above Finished Floor Level and discharge condensate wastes through cut outs in top.
 Seal around pipes with Silicon or Epoxy to prevent entry of Vermin.
 Connect to waste outlet with copper size slip coupling fitting. Fit specified Face plate.

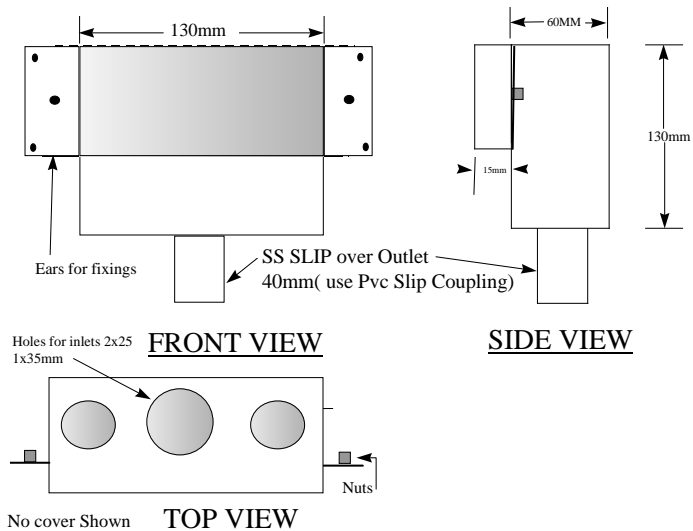
Designers & Consultants

When designing with the IWTSS the use of this Symbol communicates to the trades with clarity



Ordering Codes:

- IWTSS IWTundish
- IWTS Windowed Face Plate
- IWTPC Powder Coated FP
- IWTHP Highly Polished SS FP
- IWTSP Special Request FP



Distributed by: